

MINI UV LED INSTALLATION

UV LED DISINFECTION FOR LIMITED SPACE APPLICATIONS

Mini UV LED improves indoor air quality and fights biological contamination inside mini-splits and ceiling cassettes, particularly on the blower wheel.

Parts Included

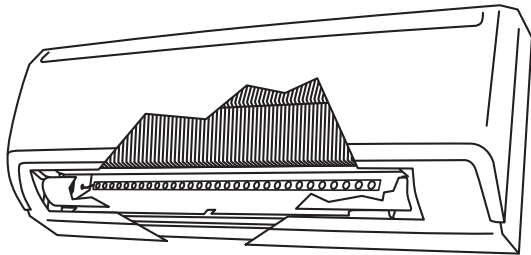


IMPORTANT!

- Only qualified technicians should install this product
- Install in accordance with relevant building codes
- Make sure mini-split blower is clean before installation
- Be careful not to damage the protective coating on LEDs

Installation Notes

Mini UV LED is typically used for mini-split systems and other limited space applications. Because space is tight the best place for mounting the LED lights is usually inside the supply vent with the light shining onto the blower wheel (which is prone to the worst mold growth). Make sure blower is clean before installation.



Cutaway view of typical Mini UV LED installation in mini split

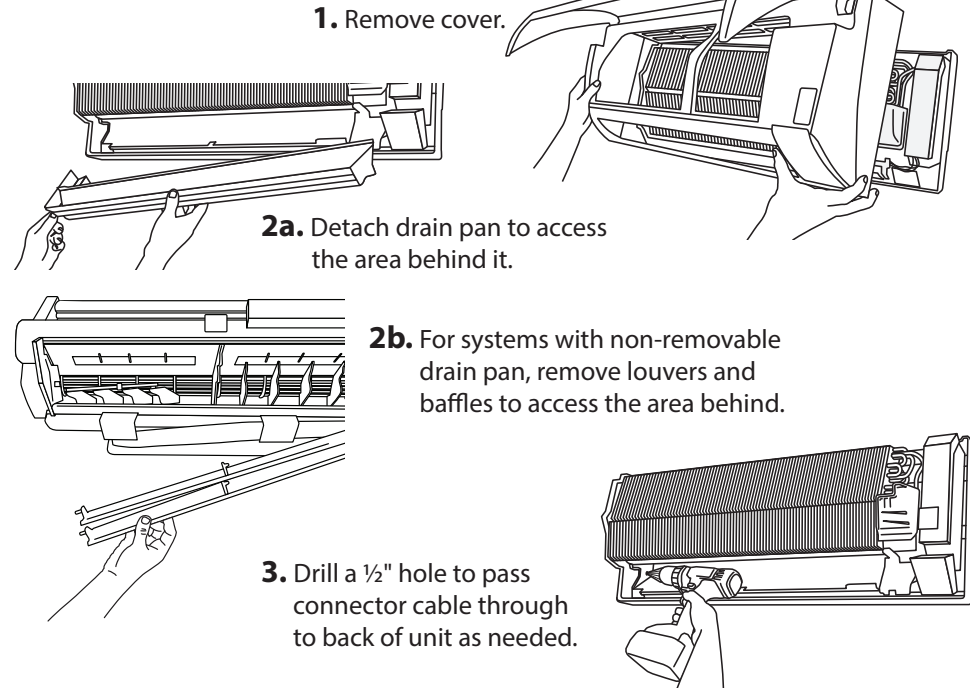
CAUTION UV LED LIGHT

Prolonged exposure to direct LED UV light may be harmful to eyes & skin. Disconnect power before servicing. Indirect exposure (blue glow) is not harmful.

IMPORTANT!

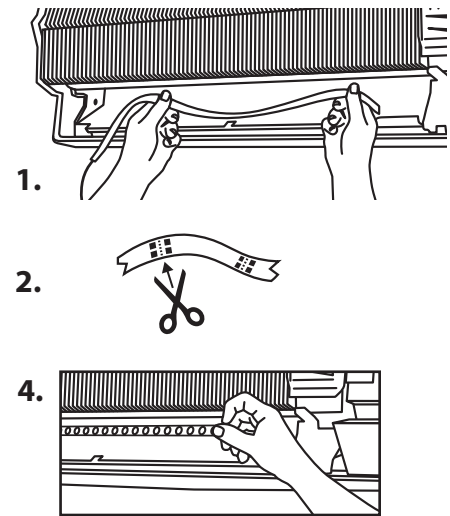
Install LED strip so that the light shines into the air system, not into the room.

Air System Preparation



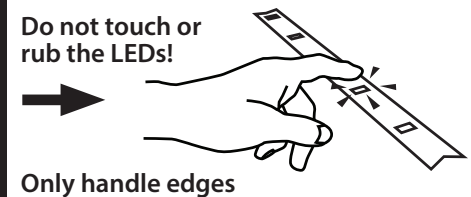
LED Strip Mounting

1. Determine the best location for the LED Strip and clean that area with the alcohol wipe. Make sure blower is clean before installation.
2. If needed shorten the LED strip by 4" segments (**cut only between copper squares on strip**).
3. Pass the connector cable through the drilled hole.
4. Peel off paper from the adhesive backing on the LED strip a few inches at a time and press the EDGES onto the clean surface.

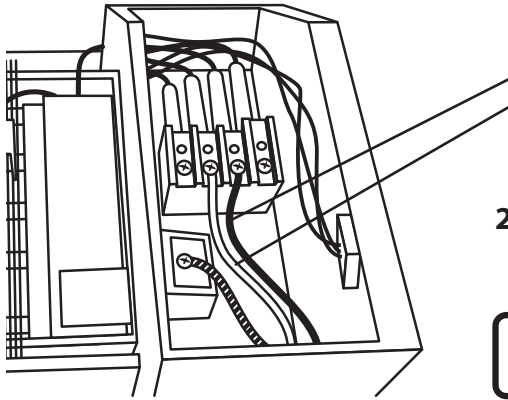


IMPORTANT!

Be careful not to touch the actual LEDs which can damage the protective membrane. Apply pressure to the outer edges of the strip to make sure the LED ribbon is securely mounted. Never submerge LED ribbon in water.

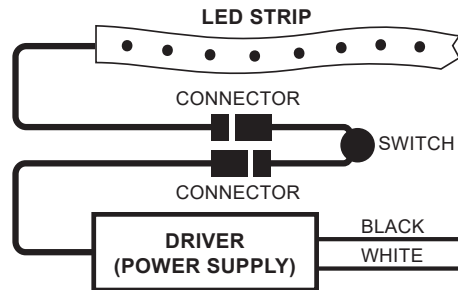


Power Supply Installation



1. Remove the control box cover and connect the wiring harness as shown.
LED Driver wiring
 - Black to hot terminal
 - White to neutral (typically S1 & S2)

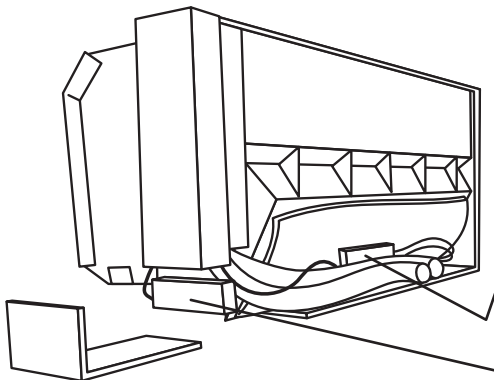
2. Wiring Diagram*



Note: Some indoor systems may require additional wiring to provide line voltage to the Mini UV LED power supply.

* Mini UV LED comes with a 120, 208, 240 VAC driver (power supply)

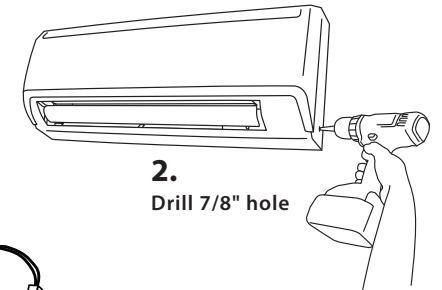
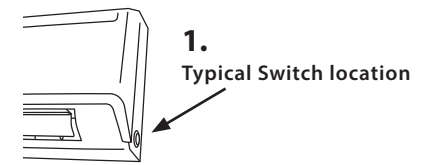
3. Connect Driver, Nighttime Switch, and LED Strip in series (see Configuration Diagram).



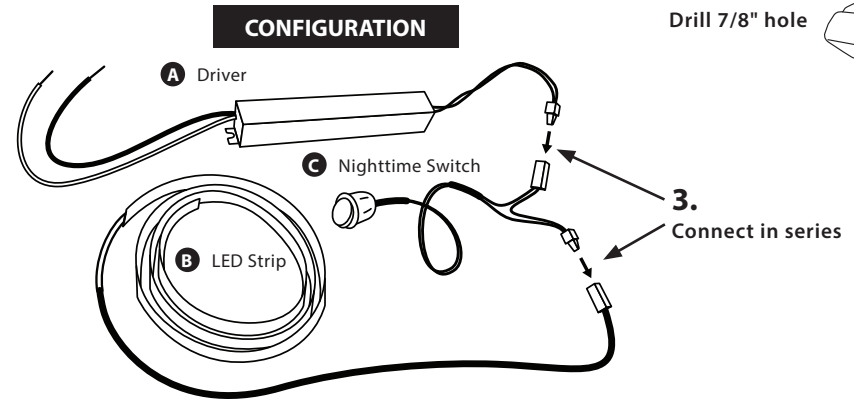
4. Tuck the power supply into the line chase on the back of the ac unit or place it in or under the control box or other secure location.
5. Return power to the system and confirm that Mini UV LED is working.
6. Apply the UV warning sticker in an appropriate location.

Nighttime Switch Installation

1. Select an appropriate location for the on/off switch on the mini-split access panel that is within 12" of the LED driver 12 VDC AMP connector.
2. Drill a 7/8" hole and insert switch.
3. Switch is connected in series with driver and LED strip using the AMP connectors.



2. Drill 7/8" hole



Extend LED Strip for Larger Systems

For larger ductless systems another LED strip (part# TUVL-MINI-LED, not included) can be joined to the one provided. This creates an LED strip up to 80".

Maintenance

The LED strip is good for 50,000 hours of operation (about 5 1/2 - 6 years). Replace with part# TUVL-MINI-LED.

CAUTION!

When cleaning mini-split do not get LED ribbon wet.
Never submerge LED ribbon in water.